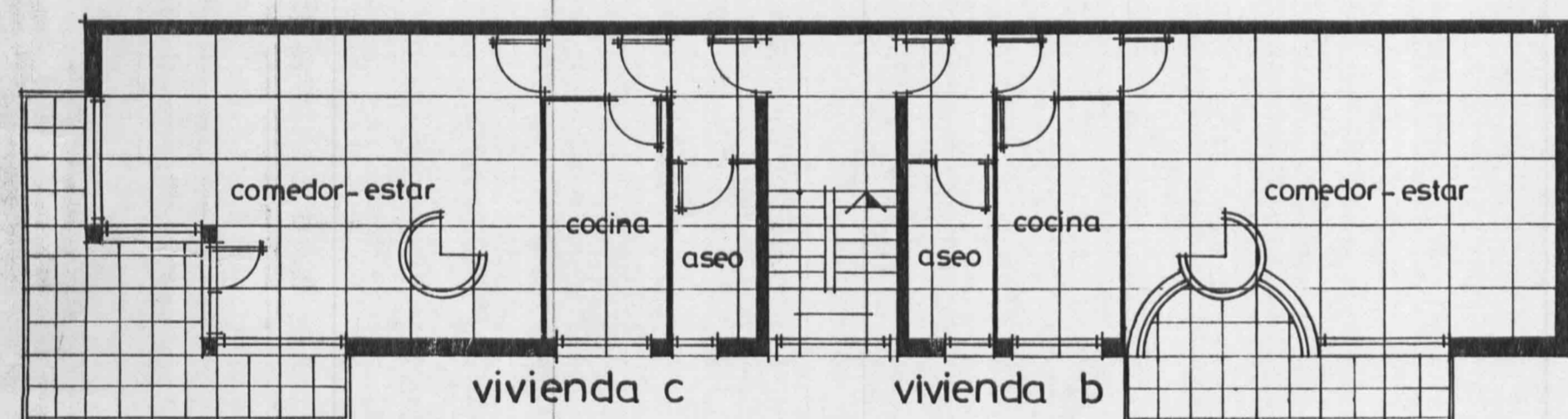
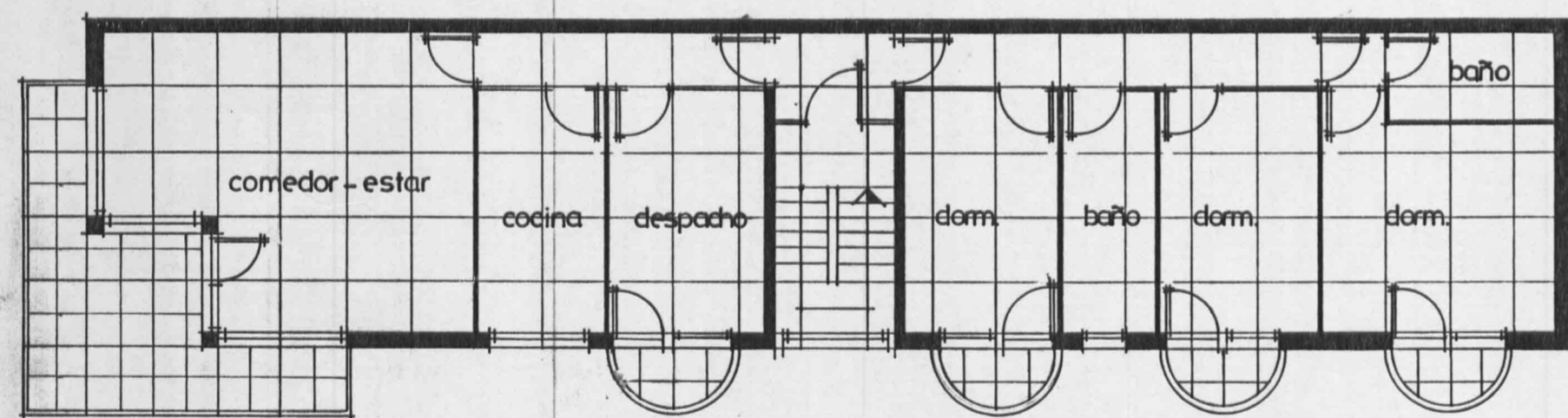


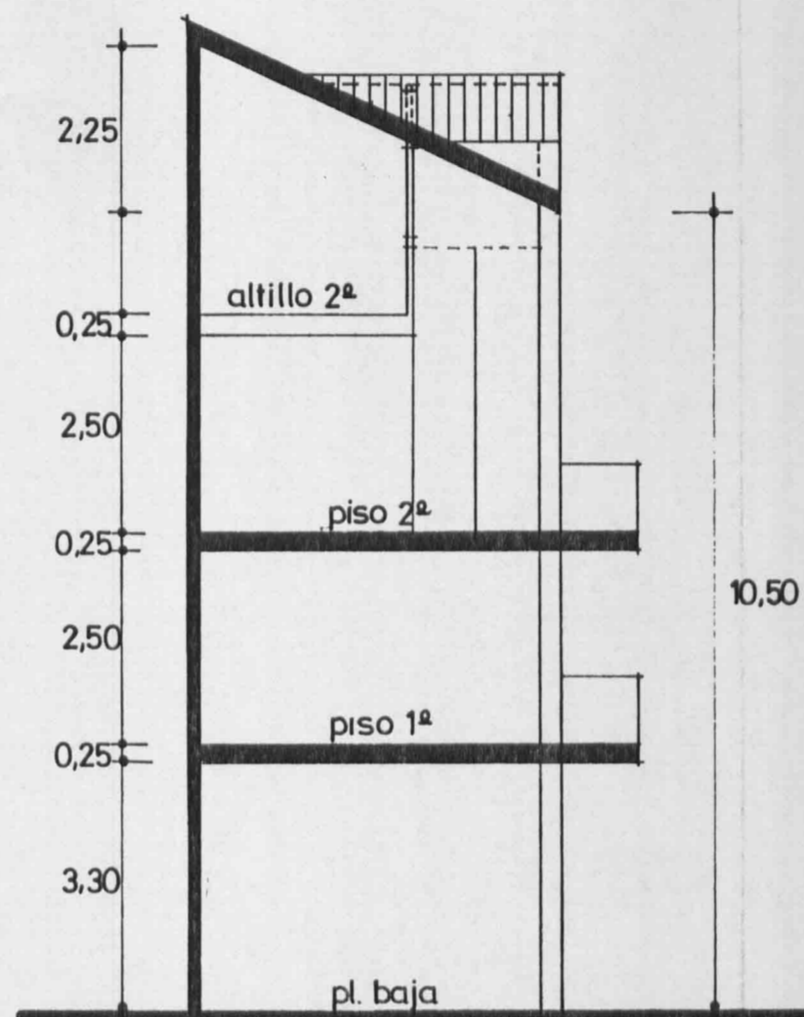
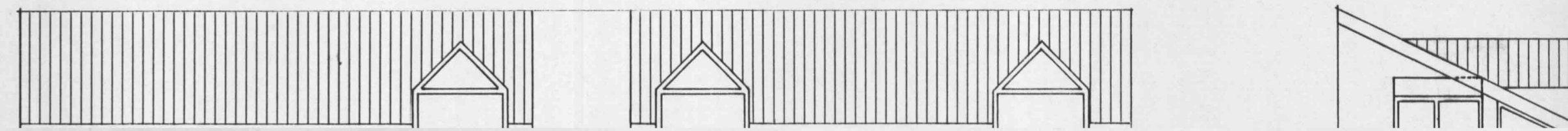
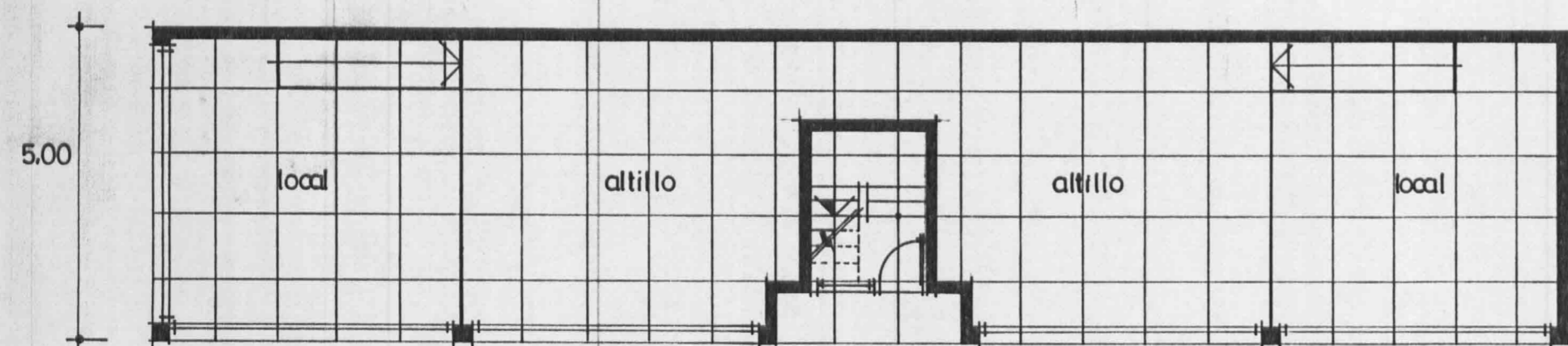
attillo piso 2º



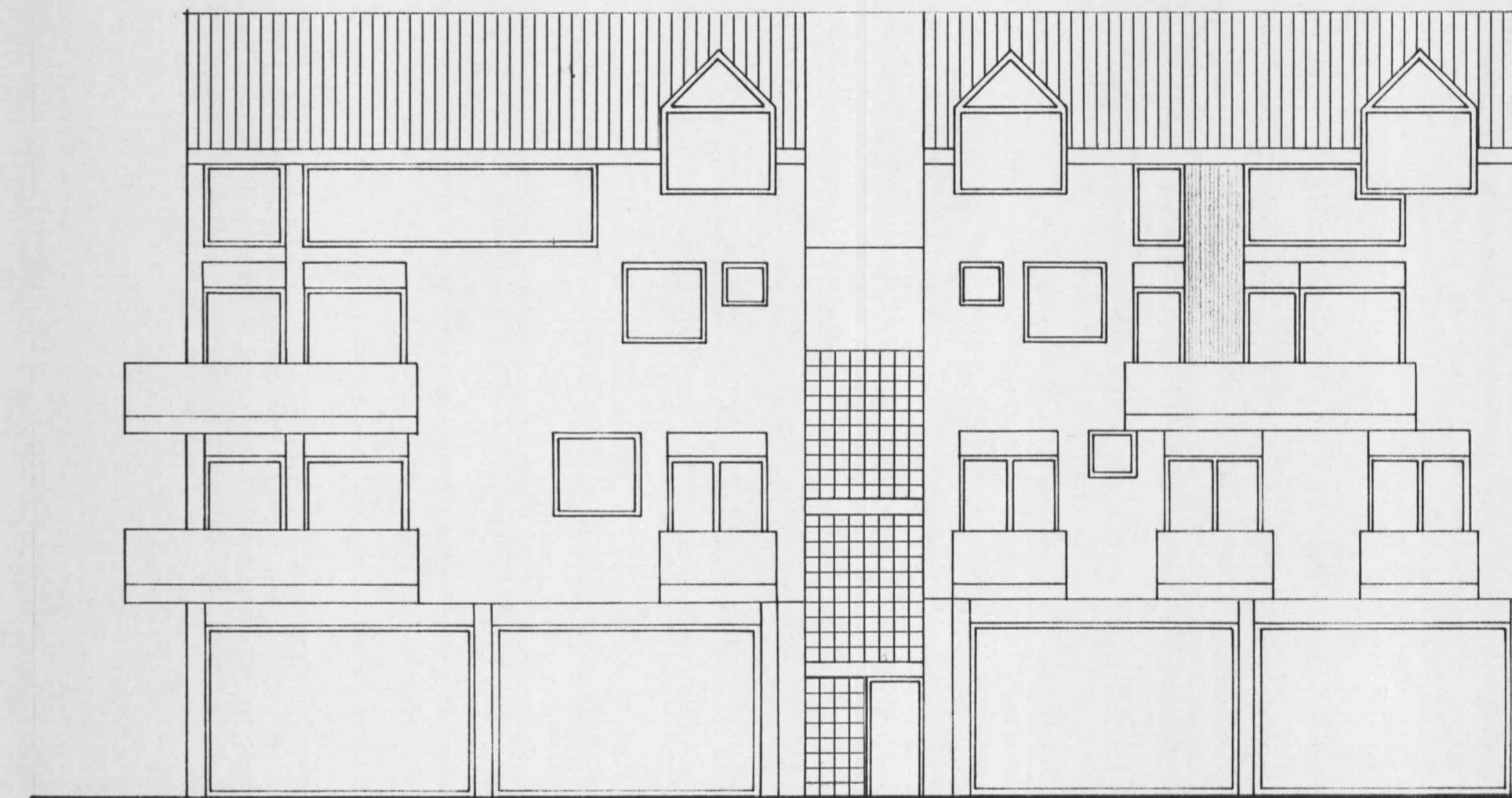
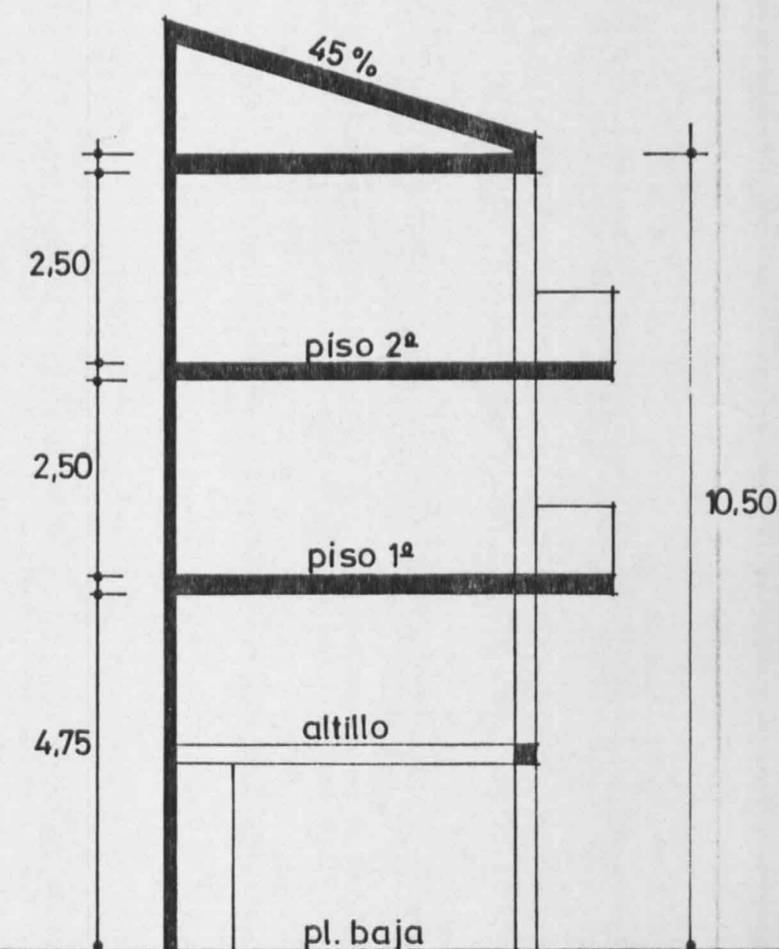
vivienda c vivienda b
piso 2º



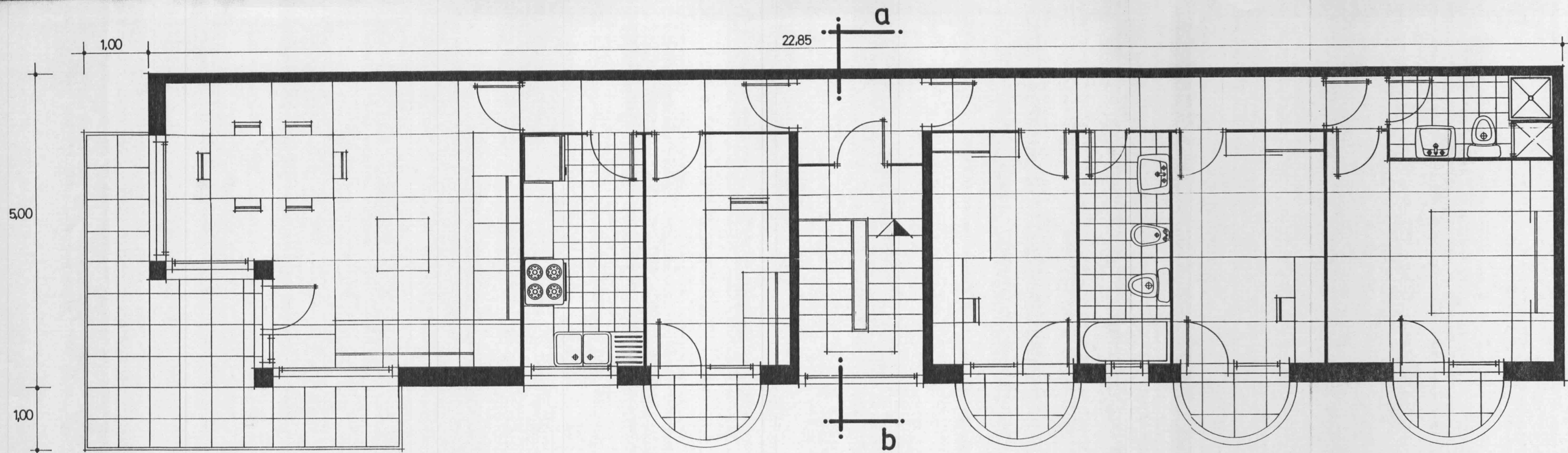
vivienda a piso 1º



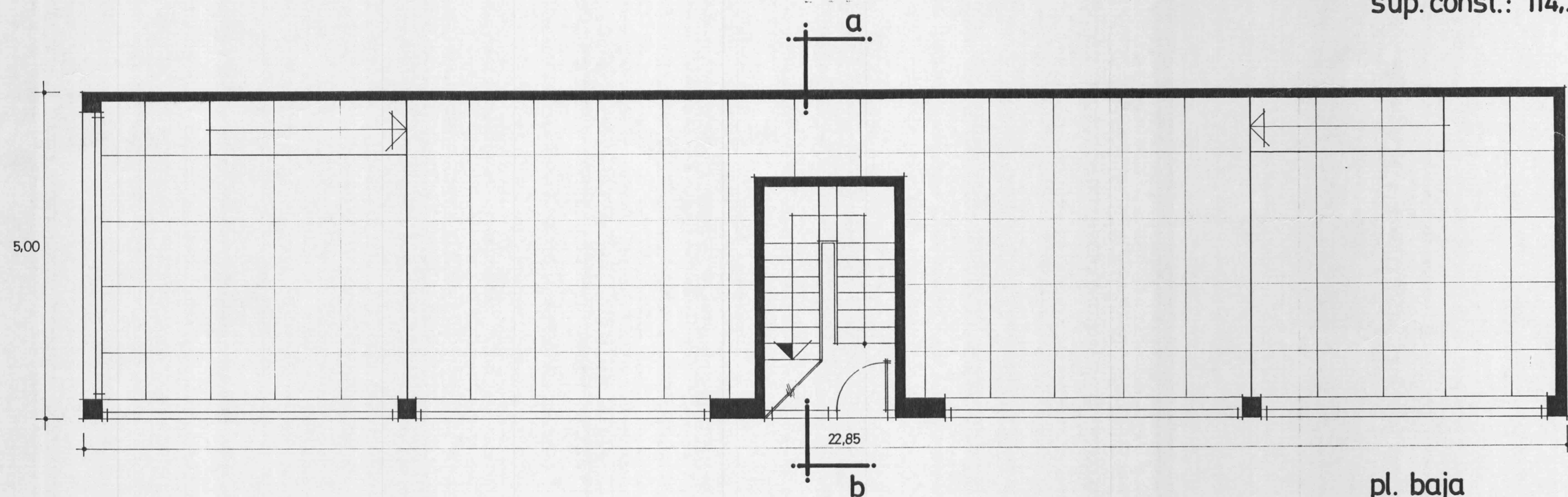
solución 1



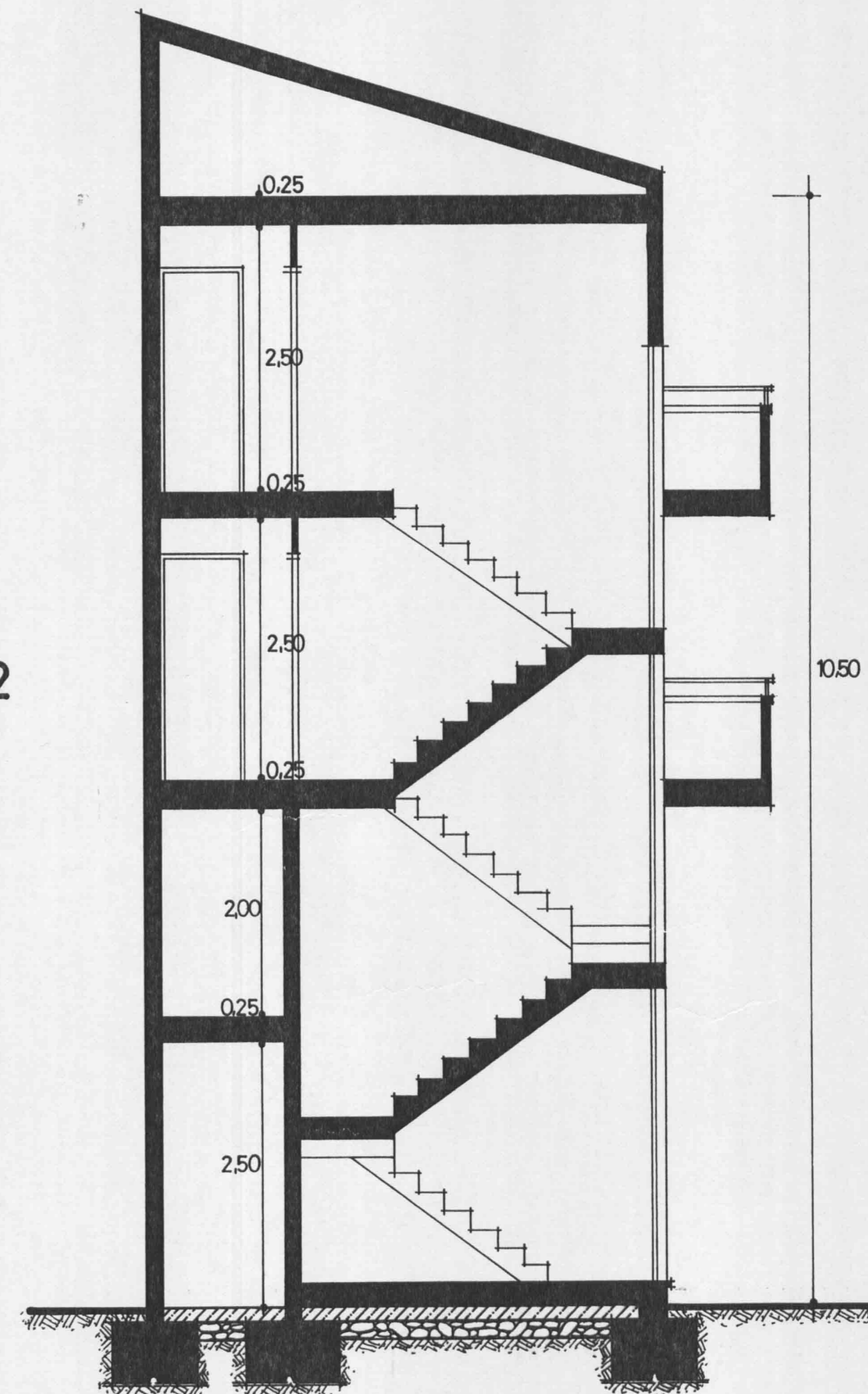
alzados



pl. tipo
sup. const.: 114,25 m²

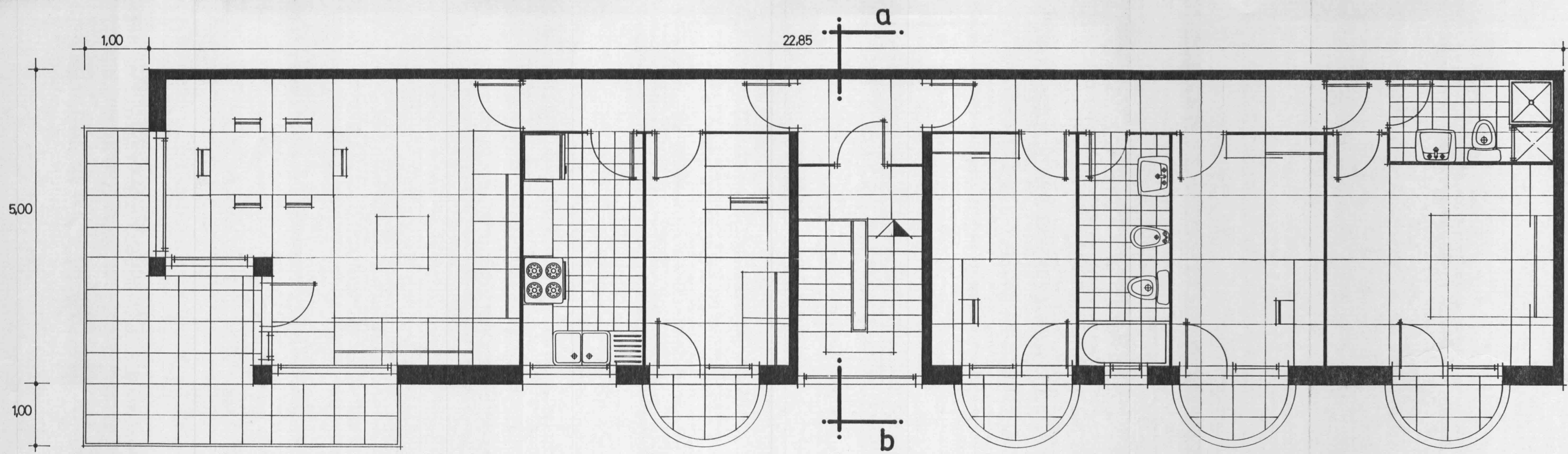


pl. baja
sup. const.: 114,25 m²

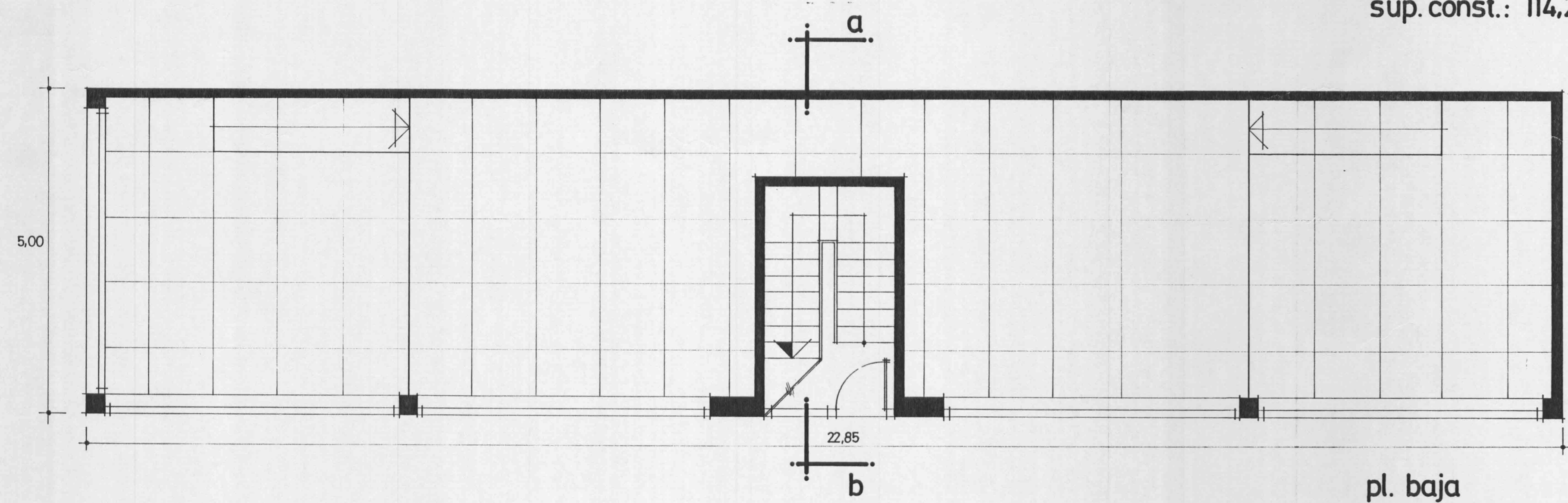


sección a-b

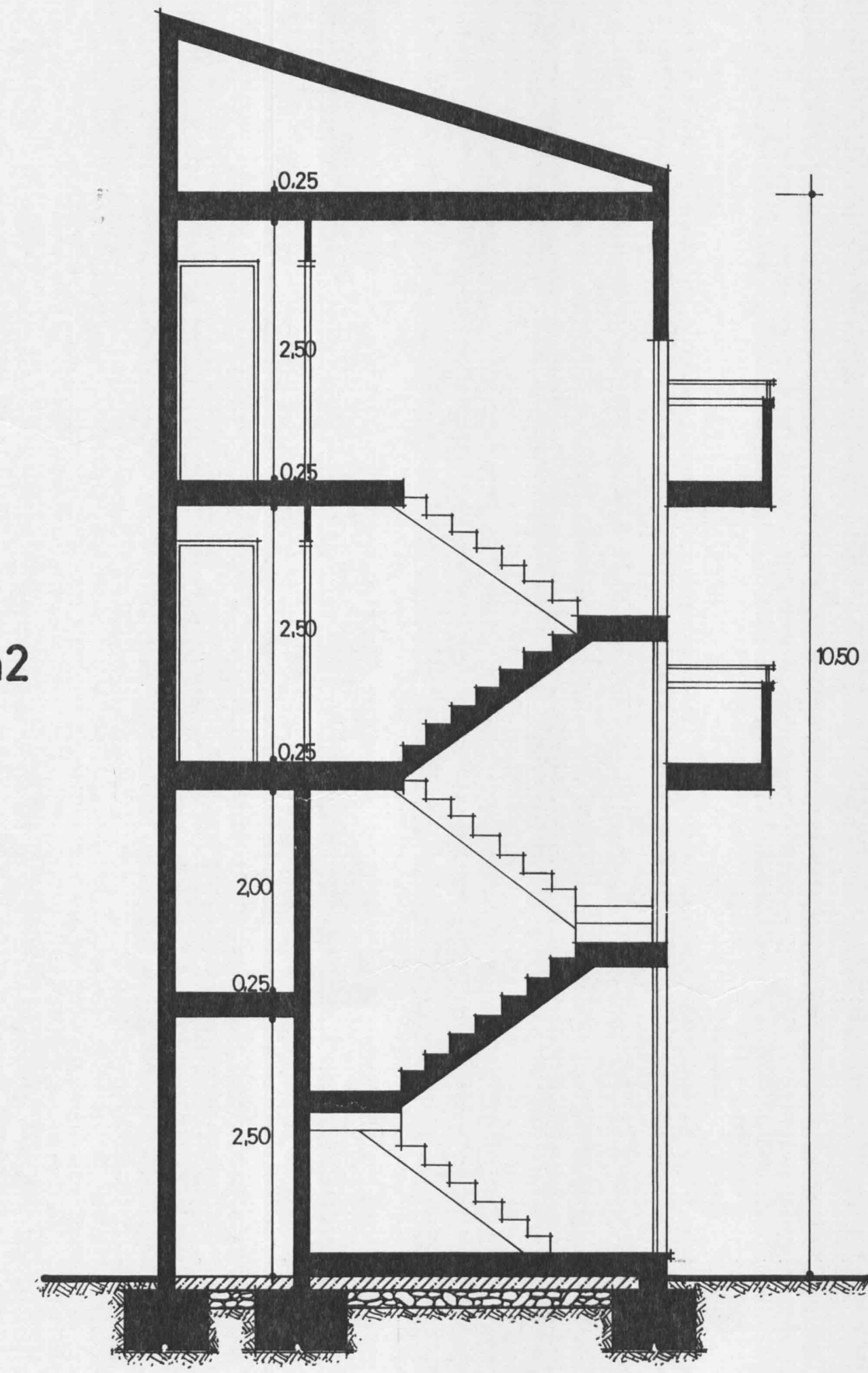
edificio plurifamiliar - solución 2
plantas y sección c/. rutlla esq. plaza
e: 1/50 sta. maria - llinars



pl. tipo
sup. const.: 114,25 m²

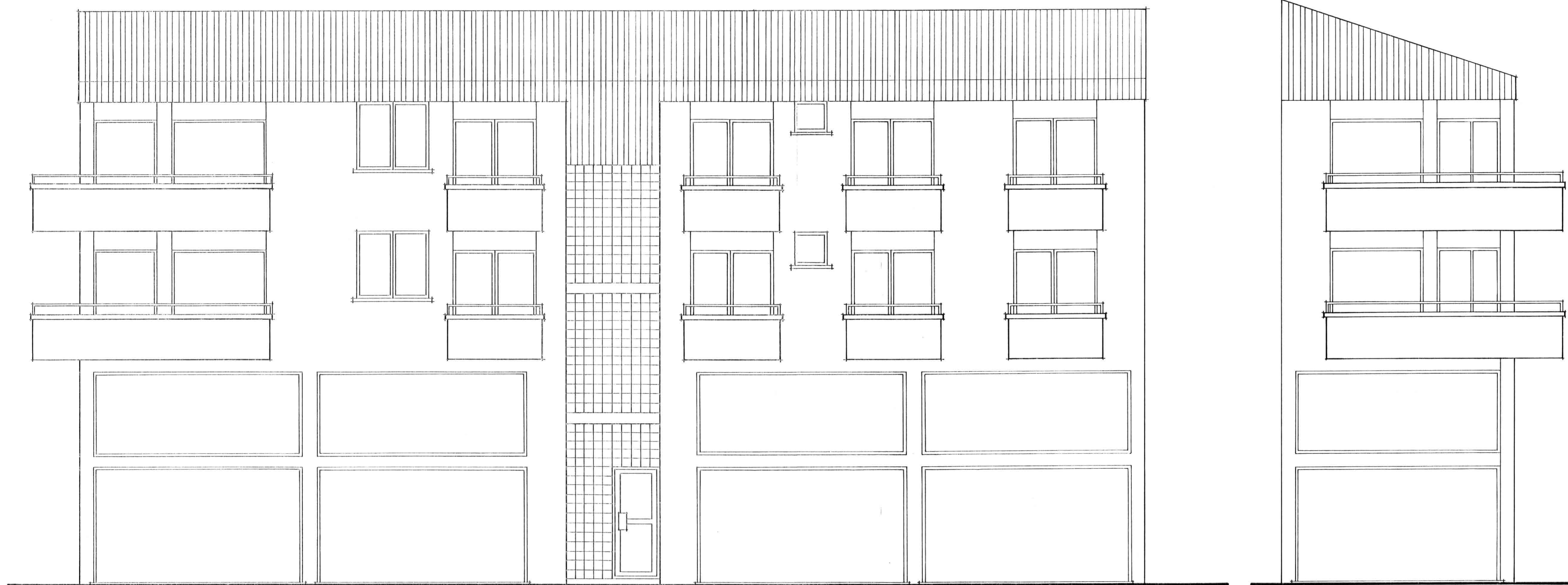


pl. baja
sup. const.: 114,25 m²



sección a-b

edificio plurifamiliar-solución 2
plantas y sección c/. rutlla esq. plaza
e: 1/50 sta. maria-llinars



alzados

edificio plurifamiliar - solución 2
alzados
e: 1/50
c/. rutlla esqu. plaza
sta. maria-llinars
junio 1976