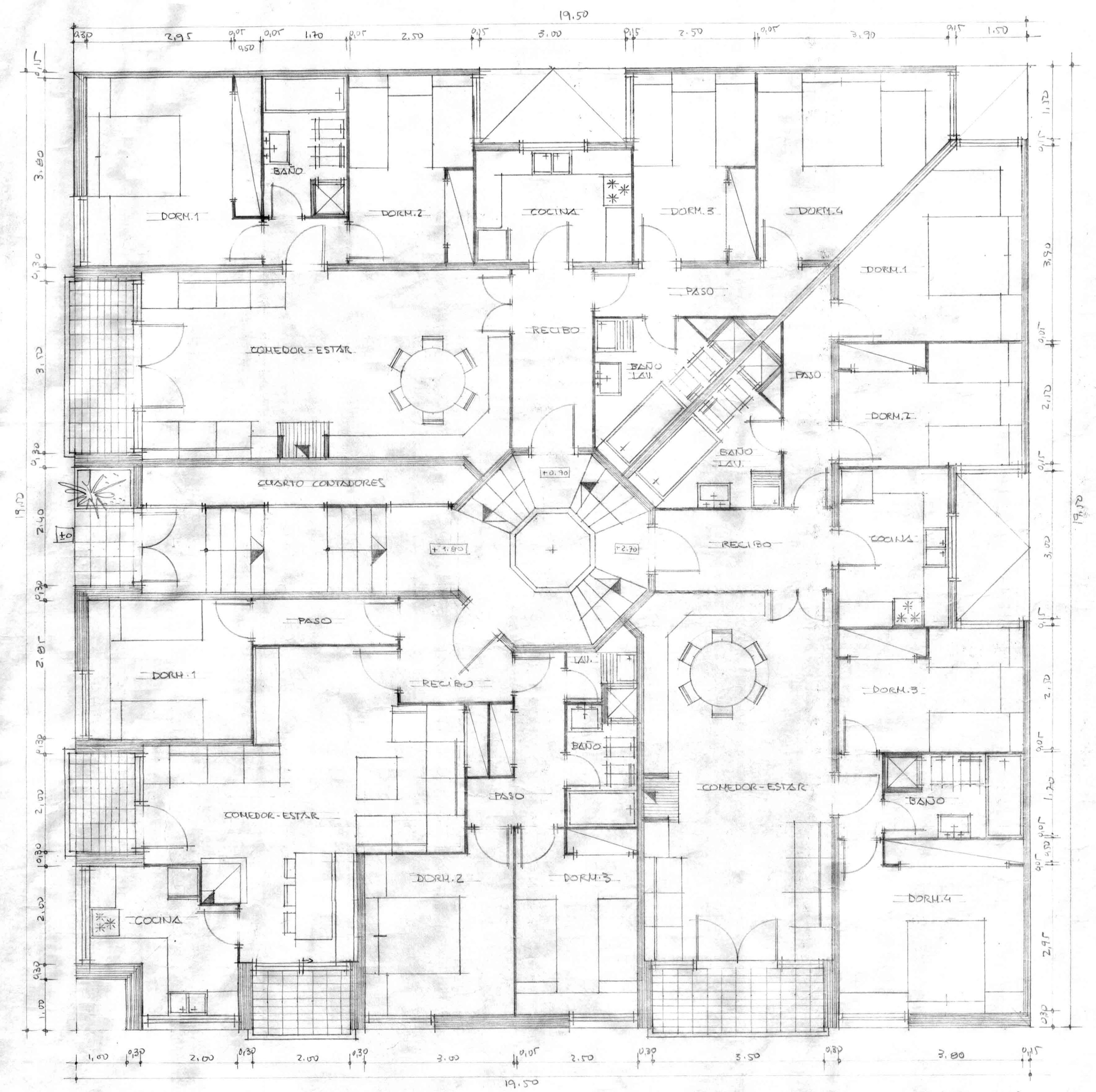
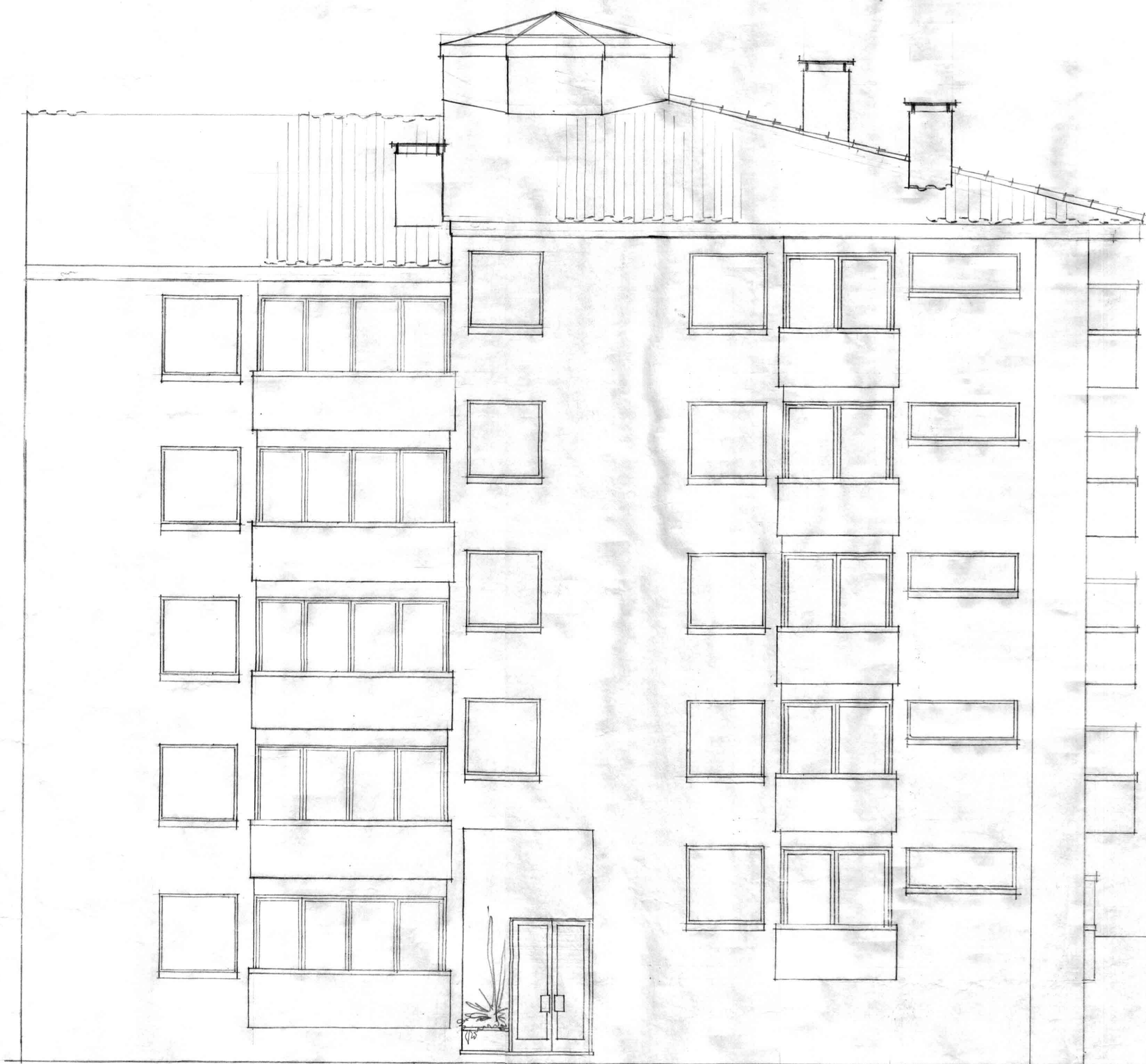


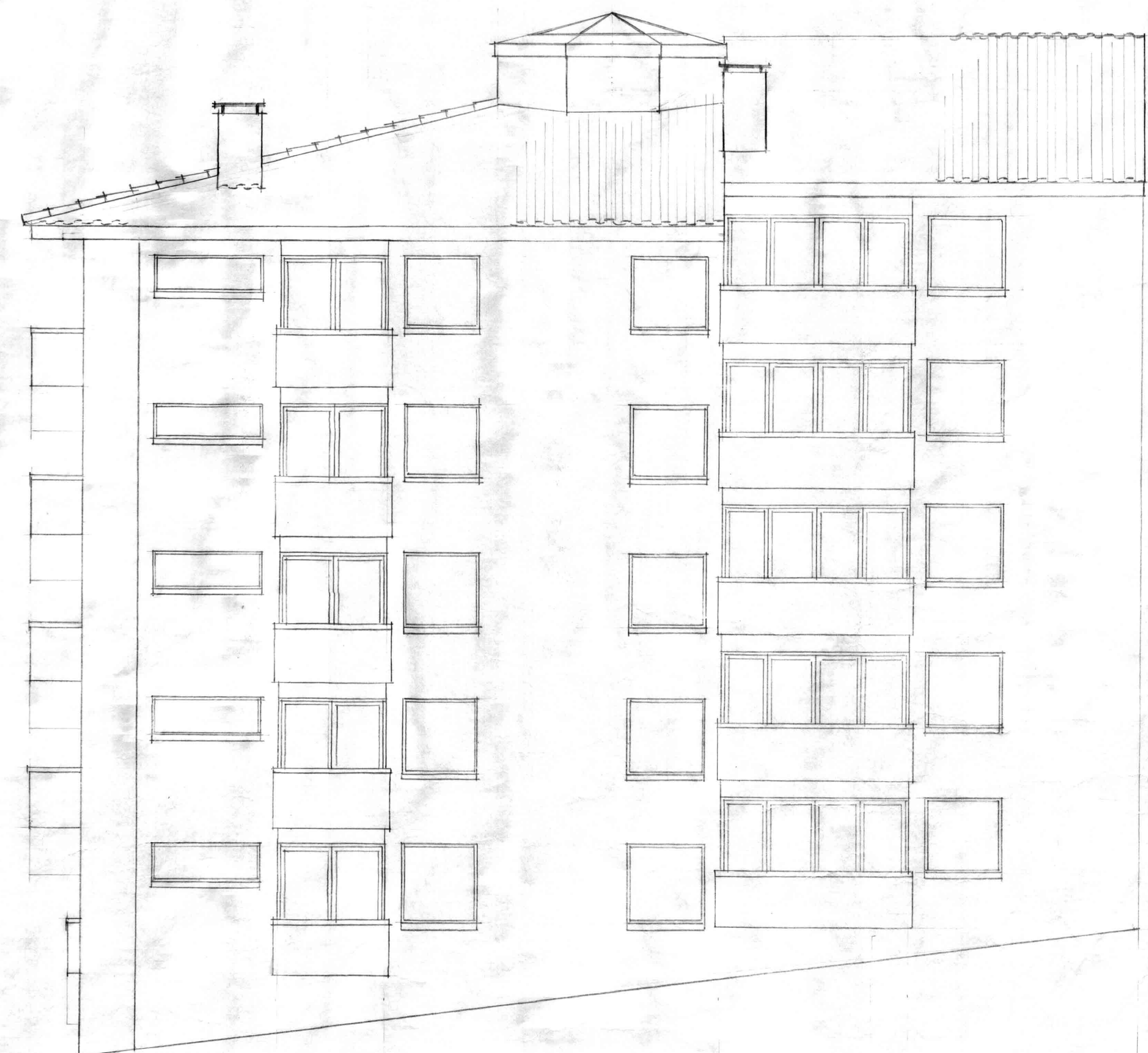
PL. PISO TIPO  
 SUP. CONSTR. = 372,65 M<sup>2</sup>  
 50% TERR. = 11,55 "  
 = 384,20 M<sup>2</sup>



PL. BAJA  
 SUP. CONSTR. = 369,77 M<sup>2</sup>  
 50% TERR. = 7,70 "  
 = 377,47 M<sup>2</sup>



ALZADO CARRETERA



16.20 m

ALZADO C/ JOAQUIN BLUME

EDIFICIO PLURIFAMILIAR EN LINAS DEL VALLES  
PROPIEDAD DE LOS S<sup>CS</sup>. HAUTE  
E: 1/50